

PT

Hand Taps for Taper Pipe Threads, Long (ℓg) Type

Overall length	Thread length	Position on basic dia.	Shank dia.	Size of square	Length of square
L	ℓ	ℓg	Ds	K	ℓk



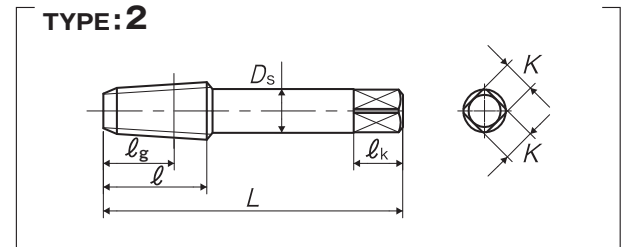
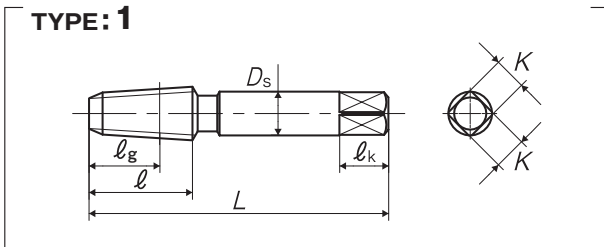
Specification



■ The PT is a hand tap for tapered pipe threads and is used for tapping products whose main purpose is the tightness of the threaded portion when connecting pipe parts etc.

Tapping Speeds depending on Materials

Medium carbon steels 中炭素鋼 ~5 (m/min)	High carbon steels 高炭素鋼 ~5 (m/min)	Alloy steels 合金鋼 ~5 (m/min)
---	---	--------------------------------------



Segment: 1G

Size	Class	Code	Chamfer	Basic major dia (mm)	L (mm)	ℓ (mm)	ℓg (mm)	Ds (mm)	K (mm)	ℓk (mm)	No. of flutes	TYPE	MSRP
For Pipe Threads													
PT 1/16-28	II	TH2T01K-8	2.5P	7.723	55	19	13	8	6	9	4	1	¥ 3,740
PT 1/8-28	II	TH2T02K	2.5P	9.728	55	19	13	8	6	9	4	2	¥ 3,740
PT 1/4-19	II	TH2T04-	2.5P	13.157	62	28	21	11	9	12	4	2	¥ 5,770
PT 3/8-19	II	TH2T06-	2.5P	16.662	65	28	21	14	11	14	4	2	¥ 9,480
PT 1/2-14	II	TH2T08Q	2.5P	20.955	80	35	25	18	14	17	4	2	¥ 15,700
PT 5/8-14	II	TH2T10Q	2.5P	22.911	82	35	25	19	15	18	4	2	¥ 20,600*
PT 3/4-14	II	TH2T12Q	2.5P	26.441	85	35	25	23	17	20	4	2	¥ 24,900
PT 7/8-14	II	TH2T14Q	2.5P	30.201	90	40	28	24	19	22	4	2	¥ 40,400*
PT 1 -11	II	TH2T16U	2.5P	33.249	95	45	32	26	21	24	5	2	¥ 45,800
PT 1 1/8-11	II	TH2T18U	2.5P	37.897	100	45	32	28	21	24	5	2	¥ 65,300*
PT 1 1/4-11	II	TH2T20U	2.5P	41.910	105	45	32	32	26	30	5	2	¥ 69,200
PT 1 3/8-11	II	TH2T22U	2.5P	44.323	110	45	32	35	26	30	6	2	¥ 96,800*
PT 1 1/2-11	II	TH2T24U	2.5P	47.803	110	45	32	38	29	32	6	2	¥ 96,800
PT 1 3/4-11	II	TH2T28U	2.5P	53.746	115	45	32	42	32	35	6	2	¥ 144,000*
PT 2 -11	II	TH2T32U	2.5P	59.614	120	50	35	46	35	38	6	2	¥ 158,000
PT 2 1/4-11	II	TH2T36U	2.5P	65.710	145	65	50	50	38	42	6	2	¥ 257,000*
PT 2 1/2-11	II	TH2T40U	2.5P	75.184	145	65	50	55	41	44	8	2	¥ 264,000*
PT 3 -11	II	TH2T48U	2.5P	87.884	155	65	52	65	50	52	8	2	¥ 396,000*
PT 3 1/2-11	II	TH2T56U	2.5P	100.330	165	68	52	70	54	58	8	2	¥ 518,000*
PT 4 -11	II	TH2T64U	2.5P	113.030	170	70	55	75	58	62	10	2	¥ 701,000*

- 8
- JIS
- 1 Spiral Fluted Taps (for blind hole)
- 2 Spiral Fluted Taps (for through hole)
- 3 Spiral Pointed Taps (for through hole)
- 4 Hand Taps
- 5 Cemented Carbide Taps
- 6 Roll Taps
- 7 Special Thread Taps Simple Inspection Tools
- 8 Pipe Taps
- 9 Thread Mills Premium Thread Mills
- 10 Dies
- 11 Center Drills Centering Tools
- 12 Precision Machinery/Metal Surgical Instruments