

③ Spiral Pointed Tap Series for through hole

Overall length	Thread length	Thread + Neck length	Shank length	Shank dia.	Size of square	Length of square
L	ℓ	ℓn	ℓs	Ds	K	ℓk

DIN

① Spiral Fluted Taps (for blind hole)

② Spiral Fluted Taps (for through hole)

③ Spiral Pointed Taps (for through hole)

④ Hand Taps

⑤ Cemented Carbide Taps

⑥ Roll Taps

⑦ Special Thread Taps (Simple inspection tools)

⑧ Pipe Taps

⑨ Thread Mills (Premium Thread Mills)

⑩ Dies

⑪ Center Drills (Centering Tools)

⑫ Precision Machinery/ Medical Surgical Instruments

DIN ③-79



PO-VA

Spiral Pointed Taps for Stainless Steels



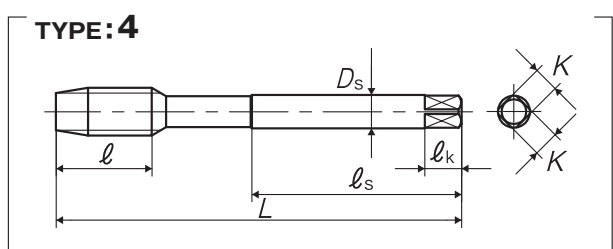
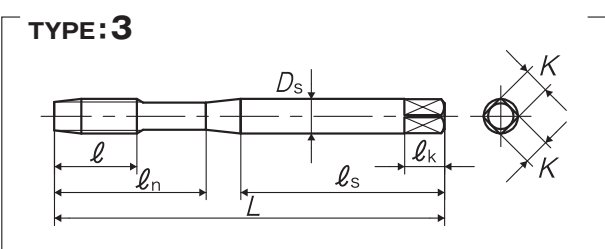
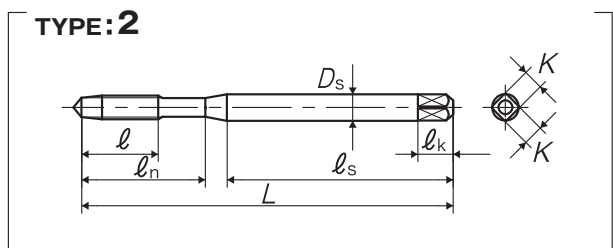
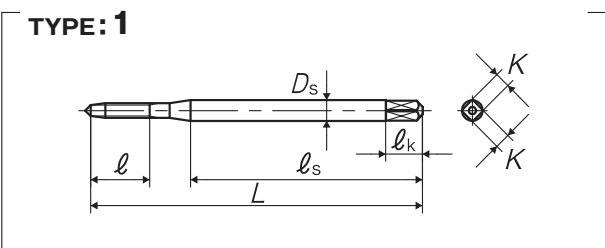
Specification



■ Suitable for stainless steels tending to cause work harden and sticky, as well as chrome steels and molybdenum steels. Through hole use.

Tapping Speeds depending on Materials

Low carbon steels 低碳素鋼 ~15 (m/min)	Medium carbon steels 中炭素鋼 ~15 (m/min)	High carbon steels 高炭素鋼 ~15 (m/min)	Alloy steels 合金鋼 ~15 (m/min)	Stainless steels ステンレス鋼 ~10 (m/min)
--	---	---	------------------------------------	---



Segment: 1F (G=1H)

Size	Class	Code	Chamfer	L (mm)	ℓ (mm)	ℓn (mm)	ℓs (mm)	Ds (mm)	K (mm)	ℓk (mm)	No. of flutes	TYPE
For Metric Threads												
M2 × 0.4	ISO2X	PD2.0EBGEX	4.5P	45	8	-	32	2.8	2.1	5	2	1
M2.5 × 0.45	ISO2X	PD2.5FBGEX	4.5P	50	8	15	33	2.8	2.1	5	2	2
M3 × 0.5	ISO2X	PD3.0GBGEX	4.5P	56	9	18	34	3.5	2.7	6	3	2
M4 × 0.7	ISO2X	PD4.0IBGEX	4.5P	63	13	21	38	4.5	3.4	6	3	2
M5 × 0.8	ISO2X	PD5.0KBGEX	4.5P	70	14	25	39	6	4.9	8	3	2
M6 × 1	ISO2X	PD6.0MBGEX	4.5P	80	15	30	45	6	4.9	8	3	2
M8 × 1.25	ISO2X	PD8.0NBGEX	4.5P	90	19	35	47	8	6.2	9	3	3
M8 × 1.25	ISO2X	PG8.0NBGEX	4.5P	90	19	-	46	6	4.9	8	3	4
M8 × 1	ISO2X	PM8.0MBGEX	4.5P	90	19	-	46	6	4.9	8	3	4
M8 × 1	ISO3	PM8.0MMGEX	4.5P	90	19	-	46	6	4.9	8	3	4
M10 × 1.5	ISO2X	PD0100BGEX	4.5P	100	23	39	52.5	10	8	11	3	3
M10 × 1.5	ISO2X	PG0100BGEX	4.5P	100	23	-	51	7	5.5	8	3	4
M10 × 1.25	ISO2X	PM010NBGEX	4.5P	100	23	-	51	7	5.5	8	3	4
M10 × 1	ISO2X	PM010MBGEX	4.5P	90	19	-	46	7	5.5	8	3	4
M12 × 1.75	ISO2X	PG012PBGEX	4.5P	110	26	-	56	9	7	10	3	4
M12 × 1.5	ISO2X	PM0120BGEX	4.5P	100	21	-	51	9	7	10	3	4
M12 × 1.25	ISO2X	PM012NBGEX	4.5P	100	21	-	51	9	7	10	3	4



This product is different from JIS products in shape and dimensions, please be careful when using.

Overall length	Thread length	Thread + Neck length	Shank length	Shank dia.	Size of square	Length of square
L	ℓ	ℓn	ℓs	Ds	K	ℓk

Size	Class	Code	Chamfer	L (mm)	ℓ (mm)	ℓn (mm)	ℓs (mm)	Ds (mm)	K (mm)	ℓk (mm)	No. of flutes	TYPE
M12 × 1	ISO2X	PM012MBGEX	4.5P	100	21	-	51	9	7	10	3	4
M14 × 2	ISO2X	PG014QBGEX	4.5P	110	26	-	56	11	9	12	3	4
M14 × 1.5	ISO2X	PM014OBGEX	4.5P	100	21	-	51	11	9	12	3	4
M16 × 2	ISO2X	PG016QBGEX	4.5P	110	26	-	56	12	9	12	3	4
M16 × 1.5	ISO2X	PM016OBGEX	4.5P	100	21	-	51	12	9	12	3	4
M18 × 2.5	ISO2X	PG018RBGEX	4.5P	125	33	-	64	14	11	14	3	4
M18 × 1.5	ISO2X	PM018OBGEX	4.5P	110	24	-	56	14	11	14	3	4
M20 × 2.5	ISO2X	PG020RBGEX	4.5P	140	33	-	71	16	12	15	3	4
M20 × 1.5	ISO2X	PM020OBGEX	4.5P	125	24	-	64	16	12	15	3	4
M22 × 2.5	ISO2X	PG022RBGEX	4.5P	140	33	-	71	18	14.5	17	3	4
M22 × 1.5	ISO2X	PM022OBGEX	4.5P	125	24	-	64	18	14.5	17	3	4
M24 × 3	ISO2X	PG024SBGEX	4.5P	160	37	-	82	18	14.5	17	3	4
M24 × 1.5	ISO2X	PM024OBGEX	4.5P	140	27	-	71	18	14.5	17	3	4
M27 × 3	ISO2X	PG027SBGEX	4.5P	160	37	-	82	20	16	19	4	4
M30 × 3.5	ISO2X	PG030TBGEX	4.5P	180	44	-	92	22	18	21	4	4
M36 × 4	ISO2X	PG036UBGEX	4.5P	200	52	-	102	28	22	25	4	4
For Unified Threads												
No.4-40UNC	2BX	PDUN4HYGEX	4.5P	56	9	18	34	3.5	2.7	6	3	2
No.6-32UNC	2BX	PDUN6JYGEX	4.5P	56	11	19	32	4	3	6	3	2
No.8-32UNC	2BX	PDUN8JYGEX	4.5P	63	13	21	38	4.5	3.4	6	3	2
No.10-24UNC	2BX	PDUNAMYGEX	4.5P	70	14	24	39	6	4.9	8	3	2
No.10-32UNF	2BX	PDUNAJYGEX	4.5P	70	14	24	39	6	4.9	8	3	2
1/4-20UNC	2BX	PDU04NYGEX	4.5P	80	15	30	42	7	5.5	8	3	2
1/4-28UNF	2BX	PDU04KYGEX	4.5P	80	15	30	42	7	5.5	8	3	2
5/16-18UNC	2BX	PDU05OYGEX	4.5P	90	19	35	47	8	6.2	9	3	3
5/16-24UNF	2BX	PMU05MYGEX	4.5P	90	19	-	46	6	4.9	8	3	4
3/8-16UNC	2BX	PDU06PYGEX	4.5P	100	23	39	54.5	9	7	10	3	3
3/8-24UNF	2BX	PMU06MYGEX	4.5P	100	23	-	51	7	5.5	8	3	4
7/16-14UNC	2BX	PGU07QYGEX	4.5P	100	23	-	51	8	6.2	9	3	4
1/2-13UNC	2BX	PGU08RYGEX	4.5P	110	26	-	56	9	7	10	3	4
1/2-20UNF	2BX	PMU08NYGEX	4.5P	100	21	-	51	9	7	10	3	4
9/16-12UNC	2BX	PGU09SYGEX	4.5P	110	26	-	56	11	9	12	3	4
9/16-18UNF	2BX	PMU09OYGEX	4.5P	100	21	-	51	11	9	12	3	4
5/8-11UNC	2BX	PGU10UYGEX	4.5P	110	26	-	56	12	9	12	3	4
5/8-18UNF	2BX	PMU10OYGEX	4.5P	100	21	-	51	12	9	12	3	4
3/4-10UNC	2BX	PGU12VYGEX	4.5P	125	33	-	64	14	11	14	3	4
3/4-16UNF	2BX	PMU12PYGEX	4.5P	110	24	-	56	14	11	14	3	4
7/8-9UNC	2BX	PGU14WYGEX	4.5P	140	33	-	71	18	14.5	17	3	4
7/8-14UNF	2BX	PMU14QYGEX	4.5P	125	24	-	64	18	14.5	17	3	4
1 -8UNC	2BX	PGU16XYGEX	4.5P	160	37	-	82	18	14.5	17	3	4
1 -12UNF	2BX	PMU16SYGEX	4.5P	140	27	-	71	18	14.5	17	3	4
For G Threads												
G 1/8-28	-	PVG0020GEX	4.5P	90	19	-	46	7	5.5	8	3	4
G 1/4-19	-	PVG0040GEX	4.5P	100	21	-	51	11	9	12	3	4
G 3/8-19	-	PVG0060GEX	4.5P	100	21	-	51	12	9	12	3	4
G 1/2-14	-	PVG0080GEX	4.5P	125	24	-	64	16	12	15	3	4
G 3/4-14	-	PVG0120GEX	4.5P	140	27	-	71	20	16	19	4	4
G 1 -11	-	PVG0160GEX	4.5P	160	29	-	82	25	20	23	4	4

- 3
- DIN**
- Spiral Fluted Taps
(for blind hole) ①
- Spiral Fluted Taps
(for through hole) ②
- Spiral Pointed Taps
(for through hole) ③
- Hand Taps ④
- Cemented Carbide Taps ⑤
- Roll Taps ⑥
- Special Thread Taps
Simple Inspection Tools ⑦
- Pipe Taps ⑧
- Thread Mills
Premium Thread Mills ⑨
- Dies ⑩
- Center Drills
Centering Tools ⑪
- Precision Machinery/
Metal Surgical Instruments ⑫

· This product is different from JIS products in shape and dimensions, please be careful when using.