

Overall length	Thread length	Thread + Neck length	Shank length	Shank dia.	Size of square	Length of square
L	ℓ	ℓn	ℓs	Ds	K	ℓk

JIS

① Spiral Fluted Taps (for blind hole)

② Spiral Fluted Taps (for through hole)

③ Spiral Pointed Taps (for through hole)

④ Hand Taps

⑤ Cemented Carbide Taps

⑥ Roll Taps

⑦ Special Thread Taps (Simple inspection tools)

⑧ Pipe Taps

⑨ Thread Mills

Dies

⑩

⑪ Center Drills (Centering Tools)

JIS

④-69



LS-HT

Long Shank Hand Taps

Specification



Recommended Tapping Speeds depending on Materials

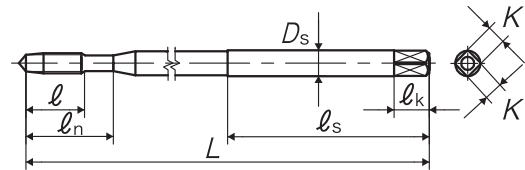
Low carbon steels 低碳素鋼	Medium carbon steels 中炭素鋼	High carbon steels 高炭素鋼
5~10 (m/min)	5~10 (m/min)	5~10 (m/min)

For icon explanation, refer to icon-1

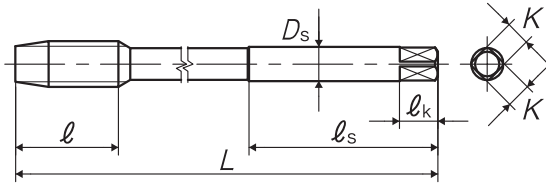


■ The LS-HT is a long shank hand tap.

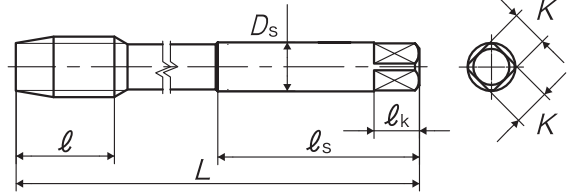
TYPE: 1



TYPE: 2



TYPE: 3



○ Oversize

Segment : 1A

Size	Class	Code	Chamfer	L (mm)	ℓ (mm)	ℓn (mm)	ℓs (mm)	Ds (mm)	K (mm)	ℓk (mm)	No. of flutes	TYPE	MSRP
For Metric Threads													
M2 × 0.4	P1	TNMP2.0E507	5P	70	7.2	12	55	3	2.5	5	3	1	¥ 3,290 ^{**}
M2 × 0.4	P1	TNMP2.0E107	1.5P	70	7.2	12	55	3	2.5	5	3	1	¥ 3,290 ^{**}
M2.3 × 0.4	P1	TNMP2.3E507	5P	70	7.2	12	55	3	2.5	5	3	1	¥ 2,950 ^{**}
M2.3 × 0.4	P1	TNMP2.3E107	1.5P	70	7.2	12	55	3	2.5	5	3	1	¥ 2,950 ^{**}
M2.5 × 0.45	P1	TNMP2.5F507	5P	70	8.1	14	53	3	2.5	5	3	1	¥ 2,600 ^{**}
M2.5 × 0.45	P1	TNMP2.5F107	1.5P	70	8.1	14	53	3	2.5	5	3	1	¥ 2,600 ^{**}
M2.6 × 0.45	P1	TNMP2.6F507	5P	70	8.1	14	53	3	2.5	5	3	1	¥ 2,600 ^{**}
M2.6 × 0.45	P1	TNMP2.6F107	1.5P	70	8.1	14	53	3	2.5	5	3	1	¥ 2,600 ^{**}
M3 × 0.5	P1	TNMP3.0G507	5P	70	9	14	50	4	3.2	6	3	1	¥ 2,010 ^{**}
M3 × 0.5	P1	TNMP3.0G510	5P	100	9	14	40	4	3.2	6	3	1	¥ 2,930
M3 × 0.5	P1	TNMP3.0G512	5P	120	9	14	40	4	3.2	6	3	1	¥ 3,510 ^{**}
M3 × 0.5	P1	TNMP3.0G515	5P	150	9	14	40	4	3.2	6	3	1	¥ 5,520 ^{**}
M3 × 0.5	P1	TNMP3.0G107	1.5P	70	9	14	50	4	3.2	6	3	1	¥ 2,010 ^{**}
M3 × 0.5	P1	TNMP3.0G110	1.5P	100	9	14	40	4	3.2	6	3	1	¥ 2,930
M3 × 0.5	P1	TNMP3.0G112	1.5P	120	9	14	40	4	3.2	6	3	1	¥ 3,510 ^{**}
M3 × 0.5	P1	TNMP3.0G115	1.5P	150	9	14	40	4	3.2	6	3	1	¥ 5,520 ^{**}
M3 × 0.5	P3	TNMR3.0G510	5P	100	9	14	40	4	3.2	6	3	1	¥ 2,930 ^{**}
M3 × 0.5	P3	TNMR3.0G515	5P	150	9	14	40	4	3.2	6	3	1	¥ 5,520 ^{**}
M3 × 0.5	P3	TNMR3.0G110	1.5P	100	9	14	40	4	3.2	6	3	1	¥ 2,930 ^{**}
M3 × 0.5	P3	TNMR3.0G115	1.5P	150	9	14	40	4	3.2	6	3	1	¥ 5,520 ^{**}
M4 × 0.7	P2	TNMQ4.0I507	5P	70	11	17	47	5	4	7	3	1	¥ 1,770 ^{**}
M4 × 0.7	P2	TNMQ4.0I510	5P	100	11	17	40	5	4	7	3	1	¥ 2,670
M4 × 0.7	P2	TNMQ4.0I512	5P	120	11	17	40	5	4	7	3	1	¥ 3,310 ^{**}



^{**} = Specified Distribution Items. Made to order products.
For improvement, spec may change without advance notice.

Overall length	Thread length	Thread + Neck length	Shank length	Shank dia.	Size of square	Length of square
L	ℓ	ℓn	ℓs	Ds	K	ℓk

Size	Class	Code	Chamfer	L (mm)	ℓ (mm)	ℓn (mm)	ℓs (mm)	Ds (mm)	K (mm)	ℓk (mm)	No. of flutes	TYPE	MSRP
M4 × 0.7	P2	TNMQ4.0I515	5P	150	11	17	40	5	4	7	3	1	¥ 5,100
M4 × 0.7	P2	TNMQ4.0I107	1.5P	70	11	17	47	5	4	7	3	1	¥ 1,770*
M4 × 0.7	P2	TNMQ4.0I110	1.5P	100	11	17	40	5	4	7	3	1	¥ 2,670
M4 × 0.7	P2	TNMQ4.0I112	1.5P	120	11	17	40	5	4	7	3	1	¥ 3,310*
M4 × 0.7	P2	TNMQ4.0I115	1.5P	150	11	17	40	5	4	7	3	1	¥ 5,100
M4 × 0.7	P3	TNMR4.0I510	5P	100	11	17	40	5	4	7	3	1	¥ 2,670*
M4 × 0.7	P3	TNMR4.0I515	5P	150	11	17	40	5	4	7	3	1	¥ 5,100*
M4 × 0.7	P3	TNMR4.0I110	1.5P	100	11	17	40	5	4	7	3	1	¥ 2,670*
M4 × 0.7	P3	TNMR4.0I115	1.5P	150	11	17	40	5	4	7	3	1	¥ 5,100*
M5 × 0.8	P2	TNMQ5.0K507	5P	70	13	22	43	5.5	4.5	7	3	1	¥ 1,600*
M5 × 0.8	P2	TNMQ5.0K510	5P	100	13	22	40	5.5	4.5	7	3	1	¥ 2,350
M5 × 0.8	P2	TNMQ5.0K512	5P	120	13	22	40	5.5	4.5	7	3	1	¥ 2,920*
M5 × 0.8	P2	TNMQ5.0K515	5P	150	13	22	40	5.5	4.5	7	3	1	¥ 3,970
M5 × 0.8	P2	TNMQ5.0K107	1.5P	70	13	22	43	5.5	4.5	7	3	1	¥ 1,600*
M5 × 0.8	P2	TNMQ5.0K110	1.5P	100	13	22	40	5.5	4.5	7	3	1	¥ 2,350
M5 × 0.8	P2	TNMQ5.0K112	1.5P	120	13	22	40	5.5	4.5	7	3	1	¥ 2,920*
M5 × 0.8	P2	TNMQ5.0K115	1.5P	150	13	22	40	5.5	4.5	7	3	1	¥ 3,970
M5 × 0.8	P3	TNMR5.0K510	5P	100	13	22	40	5.5	4.5	7	3	1	¥ 2,350*
M5 × 0.8	P3	TNMR5.0K515	5P	150	13	22	40	5.5	4.5	7	3	1	¥ 3,970*
M5 × 0.8	P3	TNMR5.0K110	1.5P	100	13	22	40	5.5	4.5	7	3	1	¥ 2,350*
M5 × 0.8	P3	TNMR5.0K115	1.5P	150	13	22	40	5.5	4.5	7	3	1	¥ 3,970*
M6 × 1	P2	TNMQ6.0M510	5P	100	15	26	40	6	4.5	7	3	1	¥ 2,000
M6 × 1	P2	TNMQ6.0M512	5P	120	15	26	40	6	4.5	7	3	1	¥ 2,580
M6 × 1	P2	TNMQ6.0M515	5P	150	15	26	40	6	4.5	7	3	1	¥ 3,540
M6 × 1	P2	TNMQ6.0M520	5P	200	15	26	40	6	4.5	7	3	1	¥ 4,900*
M6 × 1	P2	TNMQ6.0M110	1.5P	100	15	26	40	6	4.5	7	3	1	¥ 2,000
M6 × 1	P2	TNMQ6.0M112	1.5P	120	15	26	40	6	4.5	7	3	1	¥ 2,580
M6 × 1	P2	TNMQ6.0M115	1.5P	150	15	26	40	6	4.5	7	3	1	¥ 3,540
M6 × 1	P2	TNMQ6.0M120	1.5P	200	15	26	40	6	4.5	7	3	1	¥ 4,900*
M6 × 1	P3	TNMR6.0M510	5P	100	15	26	40	6	4.5	7	3	1	¥ 2,000*
M6 × 1	P3	TNMR6.0M515	5P	150	15	26	40	6	4.5	7	3	1	¥ 3,540*
M6 × 1	P3	TNMR6.0M110	1.5P	100	15	26	40	6	4.5	7	3	1	¥ 2,000*
M6 × 1	P3	TNMR6.0M115	1.5P	150	15	26	40	6	4.5	7	3	1	¥ 3,540*
M8 × 1.25	P2	TNMQ8.0N510	5P	100	19	-	50	6.2	5	8	4	2	¥ 2,600
M8 × 1.25	P2	TNMQ8.0N512	5P	120	19	-	50	6.2	5	8	4	2	¥ 3,210
M8 × 1.25	P2	TNMQ8.0N515	5P	150	19	-	50	6.2	5	8	4	2	¥ 4,420
M8 × 1.25	P2	TNMQ8.0N520	5P	200	19	-	50	6.2	5	8	4	2	¥ 6,550
M8 × 1.25	P2	TNMQ8.0N110	1.5P	100	19	-	50	6.2	5	8	4	2	¥ 2,600
M8 × 1.25	P2	TNMQ8.0N112	1.5P	120	19	-	50	6.2	5	8	4	2	¥ 3,210
M8 × 1.25	P2	TNMQ8.0N115	1.5P	150	19	-	50	6.2	5	8	4	2	¥ 4,420
M8 × 1.25	P2	TNMQ8.0N120	1.5P	200	19	-	50	6.2	5	8	4	2	¥ 6,550
M8 × 1.25	P3	TNMR8.0N510	5P	100	19	-	50	6.2	5	8	4	2	¥ 2,600*
M8 × 1.25	P3	TNMR8.0N515	5P	150	19	-	50	6.2	5	8	4	2	¥ 4,420*
M8 × 1.25	P3	TNMR8.0N520	5P	200	19	-	50	6.2	5	8	4	2	¥ 6,550*
M8 × 1.25	P3	TNMR8.0N110	1.5P	100	19	-	50	6.2	5	8	4	2	¥ 2,600*
M8 × 1.25	P3	TNMR8.0N115	1.5P	150	19	-	50	6.2	5	8	4	2	¥ 4,420*
M8 × 1.25	P3	TNMR8.0N120	1.5P	200	19	-	50	6.2	5	8	4	2	¥ 6,550*
M8 × 1	P2	TNMQ8.0M510	5P	100	19	-	50	6.2	5	8	4	2	¥ 2,790*
M8 × 1	P2	TNMQ8.0M512	5P	120	19	-	50	6.2	5	8	4	2	¥ 3,620*
M8 × 1	P2	TNMQ8.0M515	5P	150	19	-	50	6.2	5	8	4	2	¥ 4,620*

Spiral Fluted Taps
(for blind hole) ①

Spiral Fluted Taps
(for through hole) ②

Spiral Pointed Taps
(for through hole) ③

Hand Taps ④

Cemented Carbide Taps ⑤

Roll Taps ⑥

Special Thread Taps
Simple inspection tools ⑦

Pipe Taps ⑧

Thread Mills ⑨

Dies ⑩

Center Drills
Centering Tools ⑪

* = Specified Distribution Items. Made to order products.
For improvement, spec may change without advance notice.



4 Hand Tap Series

Overall length	Thread length	Thread + Neck length	Shank length	Shank dia.	Size of square	Length of square
L	ℓ	ℓn	ℓs	Ds	K	ℓk

JIS

LS-HT Long Shank Hand Taps

① Spiral Fluted Taps
(for blind hole)

② Spiral Fluted Taps
(for through hole)

③ Spiral Pointed Taps
(for through hole)

④ Hand Taps

⑤ Cemented Carbide Taps

⑥ Roll Taps

⑦ Special Thread Taps
Simple inspection tools

⑧ Pipe Taps

⑨ Thread Mills

⑩ Dies

⑪ Center Drills
Centering Tools

Size	Class	Code	Chamfer	L (mm)	ℓ (mm)	ℓn (mm)	ℓs (mm)	Ds (mm)	K (mm)	ℓk (mm)	No. of flutes	TYPE	MSRP
M8 × 1	P2	TNMQ8.0M110	1.5P	100	19	-	50	6.2	5	8	4	2	¥ 2,790 [*]
M8 × 1	P2	TNMQ8.0M112	1.5P	120	19	-	50	6.2	5	8	4	2	¥ 3,620 [*]
M8 × 1	P2	TNMQ8.0M115	1.5P	150	19	-	50	6.2	5	8	4	2	¥ 4,620 [*]
M10 × 1.5	P2	TNMQ0100510	5P	100	23	-	50	7	5.5	8	4	2	¥ 3,150
M10 × 1.5	P2	TNMQ0100512	5P	120	23	-	50	7	5.5	8	4	2	¥ 3,730
M10 × 1.5	P2	TNMQ0100515	5P	150	23	-	50	7	5.5	8	4	2	¥ 5,150
M10 × 1.5	P2	TNMQ0100520	5P	200	23	-	50	7	5.5	8	4	2	¥ 7,150
M10 × 1.5	P2	TNMQ0100525	5P	250	23	-	50	7	5.5	8	4	2	¥ 9,200 [*]
M10 × 1.5	P2	TNMQ0100110	1.5P	100	23	-	50	7	5.5	8	4	2	¥ 3,150
M10 × 1.5	P2	TNMQ0100112	1.5P	120	23	-	50	7	5.5	8	4	2	¥ 3,730
M10 × 1.5	P2	TNMQ0100115	1.5P	150	23	-	50	7	5.5	8	4	2	¥ 5,150
M10 × 1.5	P2	TNMQ0100120	1.5P	200	23	-	50	7	5.5	8	4	2	¥ 7,150
M10 × 1.5	P2	TNMQ0100125	1.5P	250	23	-	50	7	5.5	8	4	2	¥ 9,200 [*]
M10 × 1.5	P3	TNMR0100510	5P	100	23	-	50	7	5.5	8	4	2	¥ 3,150 [*]
M10 × 1.5	P3	TNMR0100515	5P	150	23	-	50	7	5.5	8	4	2	¥ 5,150 [*]
M10 × 1.5	P3	TNMR0100520	5P	200	23	-	50	7	5.5	8	4	2	¥ 7,150 [*]
M10 × 1.5	P3	TNMR0100110	1.5P	100	23	-	50	7	5.5	8	4	2	¥ 3,150 [*]
M10 × 1.5	P3	TNMR0100115	1.5P	150	23	-	50	7	5.5	8	4	2	¥ 5,150 [*]
M10 × 1.5	P3	TNMR0100120	1.5P	200	23	-	50	7	5.5	8	4	2	¥ 7,150 [*]
M10 × 1.5	P4	TNMS0100510	5P	100	23	-	50	7	5.5	8	4	2	¥ 3,150 [*]
M10 × 1.5	P4	TNMS0100515	5P	150	23	-	50	7	5.5	8	4	2	¥ 5,150 [*]
M10 × 1.5	P4	TNMS0100110	1.5P	100	23	-	50	7	5.5	8	4	2	¥ 3,150 [*]
M10 × 1.5	P4	TNMS0100115	1.5P	150	23	-	50	7	5.5	8	4	2	¥ 5,150 [*]
M10 × 1.25	P2	TNMQ010N510	5P	100	23	-	50	7	5.5	8	4	2	¥ 3,150
M10 × 1.25	P2	TNMQ010N512	5P	120	23	-	50	7	5.5	8	4	2	¥ 3,730
M10 × 1.25	P2	TNMQ010N515	5P	150	23	-	50	7	5.5	8	4	2	¥ 5,150
M10 × 1.25	P2	TNMQ010N520	5P	200	23	-	50	7	5.5	8	4	2	¥ 7,150 [*]
M10 × 1.25	P2	TNMQ010N110	1.5P	100	23	-	50	7	5.5	8	4	2	¥ 3,150
M10 × 1.25	P2	TNMQ010N112	1.5P	120	23	-	50	7	5.5	8	4	2	¥ 3,730
M10 × 1.25	P2	TNMQ010N115	1.5P	150	23	-	50	7	5.5	8	4	2	¥ 5,150
M10 × 1.25	P2	TNMQ010N120	1.5P	200	23	-	50	7	5.5	8	4	2	¥ 7,150 [*]
M10 × 1.25	P3	TNMR010N510	5P	100	23	-	50	7	5.5	8	4	2	¥ 3,150 [*]
M10 × 1.25	P3	TNMR010N515	5P	150	23	-	50	7	5.5	8	4	2	¥ 5,150 [*]
M10 × 1.25	P3	TNMR010N110	1.5P	100	23	-	50	7	5.5	8	4	2	¥ 3,150 [*]
M10 × 1.25	P3	TNMR010N115	1.5P	150	23	-	50	7	5.5	8	4	2	¥ 5,150 [*]
M10 × 1.25	P4	TNMS010N510	5P	100	23	-	50	7	5.5	8	4	2	¥ 3,150 [*]
M10 × 1.25	P4	TNMS010N515	5P	150	23	-	50	7	5.5	8	4	2	¥ 5,150 [*]
M10 × 1.25	P4	TNMS010N110	1.5P	100	23	-	50	7	5.5	8	4	2	¥ 3,150 [*]
M10 × 1.25	P4	TNMS010N115	1.5P	150	23	-	50	7	5.5	8	4	2	¥ 5,150 [*]
M10 × 1	P2	TNMQ010M510	5P	100	23	-	50	7	5.5	8	4	2	¥ 3,410 [*]
M10 × 1	P2	TNMQ010M512	5P	120	23	-	50	7	5.5	8	4	2	¥ 3,910 [*]
M10 × 1	P2	TNMQ010M515	5P	150	23	-	50	7	5.5	8	4	2	¥ 5,800 [*]
M10 × 1	P2	TNMQ010M110	1.5P	100	23	-	50	7	5.5	8	4	2	¥ 3,410 [*]
M10 × 1	P2	TNMQ010M112	1.5P	120	23	-	50	7	5.5	8	4	2	¥ 3,910 [*]
M10 × 1	P2	TNMQ010M115	1.5P	150	23	-	50	7	5.5	8	4	2	¥ 5,800 [*]
M12 × 1.75	P2	TNMQ012P510	5P	100	26	-	50	8.5	6.5	9	4	2	¥ 3,860
M12 × 1.75	P2	TNMQ012P512	5P	120	26	-	50	8.5	6.5	9	4	2	¥ 4,480
M12 × 1.75	P2	TNMQ012P515	5P	150	26	-	50	8.5	6.5	9	4	2	¥ 6,440
M12 × 1.75	P2	TNMQ012P520	5P	200	26	-	50	8.5	6.5	9	4	2	¥ 8,870
M12 × 1.75	P2	TNMQ012P525	5P	250	26	-	50	8.5	6.5	9	4	2	¥ 11,500 [*]



※ = Specified Distribution Items. Made to order products.
For improvement, spec may change without advance notice.

Overall length	Thread length	Thread + Neck length	Shank length	Shank dia.	Size of square	Length of square
L	ℓ	ℓn	ℓs	Ds	K	ℓk

4

JIS

LS-HT Long Shank Hand Taps

Size	Class	Code	Chamfer	L (mm)	ℓ (mm)	ℓn (mm)	ℓs (mm)	Ds (mm)	K (mm)	ℓk (mm)	No. of flutes	TYPE	MSRP
M12 × 1.75	P2	TNMQ012P110	1.5P	100	26	-	50	8.5	6.5	9	4	2	¥ 3,860
M12 × 1.75	P2	TNMQ012P112	1.5P	120	26	-	50	8.5	6.5	9	4	2	¥ 4,480
M12 × 1.75	P2	TNMQ012P115	1.5P	150	26	-	50	8.5	6.5	9	4	2	¥ 6,440
M12 × 1.75	P2	TNMQ012P120	1.5P	200	26	-	50	8.5	6.5	9	4	2	¥ 8,870
M12 × 1.75	P2	TNMQ012P125	1.5P	250	26	-	50	8.5	6.5	9	4	2	¥ 11,500*
M12 × 1.75	P3	TNMR012P515	5P	150	26	-	50	8.5	6.5	9	4	2	¥ 6,440*
M12 × 1.75	P3	TNMR012P520	5P	200	26	-	50	8.5	6.5	9	4	2	¥ 8,870*
M12 × 1.75	P3	TNMR012P115	1.5P	150	26	-	50	8.5	6.5	9	4	2	¥ 6,440*
M12 × 1.75	P3	TNMR012P120	1.5P	200	26	-	50	8.5	6.5	9	4	2	¥ 8,870*
M12 × 1.75	P4	TNMS012P515	5P	150	26	-	50	8.5	6.5	9	4	2	¥ 6,440*
M12 × 1.75	P4	TNMS012P520	5P	200	26	-	50	8.5	6.5	9	4	2	¥ 8,870*
M12 × 1.75	P4	TNMS012P115	1.5P	150	26	-	50	8.5	6.5	9	4	2	¥ 6,440*
M12 × 1.75	P4	TNMS012P120	1.5P	200	26	-	50	8.5	6.5	9	4	2	¥ 8,870*
M12 × 1.5	P2	TNMQ0120510	5P	100	26	-	50	8.5	6.5	9	4	2	¥ 3,860*
M12 × 1.5	P2	TNMQ0120512	5P	120	26	-	50	8.5	6.5	9	4	2	¥ 4,480*
M12 × 1.5	P2	TNMQ0120515	5P	150	26	-	50	8.5	6.5	9	4	2	¥ 6,440*
M12 × 1.5	P2	TNMQ0120520	5P	200	26	-	50	8.5	6.5	9	4	2	¥ 8,870*
M12 × 1.5	P2	TNMQ0120110	1.5P	100	26	-	50	8.5	6.5	9	4	2	¥ 3,860*
M12 × 1.5	P2	TNMQ0120112	1.5P	120	26	-	50	8.5	6.5	9	4	2	¥ 4,480*
M12 × 1.5	P2	TNMQ0120115	1.5P	150	26	-	50	8.5	6.5	9	4	2	¥ 6,440*
M12 × 1.5	P2	TNMQ0120120	1.5P	200	26	-	50	8.5	6.5	9	4	2	¥ 8,870*
M12 × 1.5	P3	TNMR0120515	5P	150	26	-	50	8.5	6.5	9	4	2	¥ 6,440*
M12 × 1.5	P3	TNMR0120115	1.5P	150	26	-	50	8.5	6.5	9	4	2	¥ 6,440*
M12 × 1.5	P4	TNMS0120515	5P	150	26	-	50	8.5	6.5	9	4	2	¥ 6,440*
M12 × 1.5	P4	TNMS0120520	5P	200	26	-	50	8.5	6.5	9	4	2	¥ 8,870*
M12 × 1.5	P4	TNMS0120115	1.5P	150	26	-	50	8.5	6.5	9	4	2	¥ 6,440*
M12 × 1.5	P4	TNMS0120120	1.5P	200	26	-	50	8.5	6.5	9	4	2	¥ 8,870*
M12 × 1.25	P2	TNMQ012N510	5P	100	26	-	50	8.5	6.5	9	4	2	¥ 3,860
M12 × 1.25	P2	TNMQ012N512	5P	120	26	-	50	8.5	6.5	9	4	2	¥ 4,480*
M12 × 1.25	P2	TNMQ012N515	5P	150	26	-	50	8.5	6.5	9	4	2	¥ 6,440
M12 × 1.25	P2	TNMQ012N520	5P	200	26	-	50	8.5	6.5	9	4	2	¥ 8,870*
M12 × 1.25	P2	TNMQ012N110	1.5P	100	26	-	50	8.5	6.5	9	4	2	¥ 3,860
M12 × 1.25	P2	TNMQ012N112	1.5P	120	26	-	50	8.5	6.5	9	4	2	¥ 4,480*
M12 × 1.25	P2	TNMQ012N115	1.5P	150	26	-	50	8.5	6.5	9	4	2	¥ 6,440
M12 × 1.25	P2	TNMQ012N120	1.5P	200	26	-	50	8.5	6.5	9	4	2	¥ 8,870*
M12 × 1.25	P3	TNMR012N515	5P	150	26	-	50	8.5	6.5	9	4	2	¥ 6,440*
M12 × 1.25	P3	TNMR012N115	1.5P	150	26	-	50	8.5	6.5	9	4	2	¥ 6,440*
M12 × 1.25	P4	TNMS012N515	5P	150	26	-	50	8.5	6.5	9	4	2	¥ 6,440*
M12 × 1.25	P4	TNMS012N520	5P	200	26	-	50	8.5	6.5	9	4	2	¥ 8,870*
M12 × 1.25	P4	TNMS012N115	1.5P	150	26	-	50	8.5	6.5	9	4	2	¥ 6,440*
M12 × 1.25	P4	TNMS012N120	1.5P	200	26	-	50	8.5	6.5	9	4	2	¥ 8,870*
M12 × 1	P2	TNMQ012M510	5P	100	26	-	50	8.5	6.5	9	4	2	¥ 4,690*
M12 × 1	P2	TNMQ012M512	5P	120	26	-	50	8.5	6.5	9	4	2	¥ 5,300*
M12 × 1	P2	TNMQ012M515	5P	150	26	-	50	8.5	6.5	9	4	2	¥ 7,980*
M12 × 1	P2	TNMQ012M110	1.5P	100	26	-	50	8.5	6.5	9	4	2	¥ 4,690*
M12 × 1	P2	TNMQ012M112	1.5P	120	26	-	50	8.5	6.5	9	4	2	¥ 5,300*
M12 × 1	P2	TNMQ012M115	1.5P	150	26	-	50	8.5	6.5	9	4	2	¥ 7,980*
M14 × 2	P2	TNMQ014Q512	5P	120	26	-	60	10.5	8	11	4	2	¥ 5,900*
M14 × 2	P2	TNMQ014Q515	5P	150	26	-	60	10.5	8	11	4	2	¥ 8,070
M14 × 2	P2	TNMQ014Q520	5P	200	26	-	60	10.5	8	11	4	2	¥ 10,800*

Spiral Fluted Taps
(for blind hole) ①Spiral Fluted Taps
(for through hole) ②Spiral Pointed Taps
(for through hole) ③

Hand Taps ④

Cemented Carbide Taps ⑤

Roll Taps ⑥

Special Thread Taps
Simple inspection tools ⑦

Pipe Taps ⑧

Thread Mills ⑨

Dies ⑩

Center Drills
Centering Tools ⑪* = Specified Distribution Items. Made to order products.
For improvement, spec may change without advance notice.Think threads with
YAMAWA

JIS

④-72

4 Hand Tap Series

Overall length	Thread length	Thread + Neck length	Shank length	Shank dia.	Size of square	Length of square
L	ℓ	ℓn	ℓs	Ds	K	ℓk

JIS

LS-HT Long Shank Hand Taps

① Spiral Fluted Taps
(for blind hole)

② Spiral Fluted Taps
(for through hole)

③ Spiral Pointed Taps
(for through hole)

④ Hand Taps

⑤ Cemented Carbide Taps

⑥ Roll Taps

⑦ Special Thread Taps
Simple inspection tools

⑧ Pipe Taps

⑨ Thread Mills

⑩ Dies

⑪ Center Drills
Centering Tools

Size	Class	Code	Chamfer	L (mm)	ℓ (mm)	ℓn (mm)	ℓs (mm)	Ds (mm)	K (mm)	ℓk (mm)	No. of flutes	TYPE	MSRP
M14 × 2	P2	TNMQ014Q525	5P	250	26	-	60	10.5	8	11	4	2	¥ 13,700**
M14 × 2	P2	TNMQ014Q112	1.5P	120	26	-	60	10.5	8	11	4	2	¥ 5,900**
M14 × 2	P2	TNMQ014Q115	1.5P	150	26	-	60	10.5	8	11	4	2	¥ 8,070
M14 × 2	P2	TNMQ014Q120	1.5P	200	26	-	60	10.5	8	11	4	2	¥ 10,800**
M14 × 2	P2	TNMQ014Q125	1.5P	250	26	-	60	10.5	8	11	4	2	¥ 13,700**
M14 × 2	P3	TNMR014Q515	5P	150	26	-	60	10.5	8	11	4	2	¥ 8,070**
M14 × 2	P3	TNMR014Q520	5P	200	26	-	60	10.5	8	11	4	2	¥ 10,800**
M14 × 2	P3	TNMR014Q115	1.5P	150	26	-	60	10.5	8	11	4	2	¥ 8,070**
M14 × 2	P3	TNMR014Q120	1.5P	200	26	-	60	10.5	8	11	4	2	¥ 10,800**
M14 × 1.5	P2	TNMQ014O512	5P	120	26	-	60	10.5	8	11	4	2	¥ 5,900**
M14 × 1.5	P2	TNMQ014O515	5P	150	26	-	60	10.5	8	11	4	2	¥ 8,070
M14 × 1.5	P2	TNMQ014O520	5P	200	26	-	60	10.5	8	11	4	2	¥ 10,800**
M14 × 1.5	P2	TNMQ014O112	1.5P	120	26	-	60	10.5	8	11	4	2	¥ 5,900**
M14 × 1.5	P2	TNMQ014O115	1.5P	150	26	-	60	10.5	8	11	4	2	¥ 8,070
M14 × 1.5	P2	TNMQ014O120	1.5P	200	26	-	60	10.5	8	11	4	2	¥ 10,800**
M14 × 1.5	P3	TNMR014O515	5P	150	26	-	60	10.5	8	11	4	2	¥ 8,070**
M14 × 1.5	P3	TNMR014O115	1.5P	150	26	-	60	10.5	8	11	4	2	¥ 8,070**
M14 × 1	P2	TNMQ014M515	5P	150	26	-	60	10.5	8	11	4	2	¥ 9,130**
M14 × 1	P2	TNMQ014M115	1.5P	150	26	-	60	10.5	8	11	4	2	¥ 9,130**
M16 × 2	P2	TNMQ016Q515	5P	150	26	-	60	12.5	10	13	4	2	¥ 8,760
M16 × 2	P2	TNMQ016Q520	5P	200	26	-	60	12.5	10	13	4	2	¥ 11,500
M16 × 2	P2	TNMQ016Q525	5P	250	26	-	60	12.5	10	13	4	2	¥ 14,300**
M16 × 2	P2	TNMQ016Q115	1.5P	150	26	-	60	12.5	10	13	4	2	¥ 8,760
M16 × 2	P2	TNMQ016Q120	1.5P	200	26	-	60	12.5	10	13	4	2	¥ 11,500
M16 × 2	P2	TNMQ016Q125	1.5P	250	26	-	60	12.5	10	13	4	2	¥ 14,300**
M16 × 2	P3	TNMR016Q515	5P	150	26	-	60	12.5	10	13	4	2	¥ 8,760**
M16 × 2	P3	TNMR016Q520	5P	200	26	-	60	12.5	10	13	4	2	¥ 11,500**
M16 × 2	P3	TNMR016Q115	1.5P	150	26	-	60	12.5	10	13	4	2	¥ 8,760**
M16 × 2	P3	TNMR016Q120	1.5P	200	26	-	60	12.5	10	13	4	2	¥ 11,500**
M16 × 1.5	P2	TNMQ016O512	5P	120	26	-	60	12.5	10	13	4	2	¥ 7,040**
M16 × 1.5	P2	TNMQ016O515	5P	150	26	-	60	12.5	10	13	4	2	¥ 8,760
M16 × 1.5	P2	TNMQ016O520	5P	200	26	-	60	12.5	10	13	4	2	¥ 11,500**
M16 × 1.5	P2	TNMQ016O112	1.5P	120	26	-	60	12.5	10	13	4	2	¥ 7,040**
M16 × 1.5	P2	TNMQ016O115	1.5P	150	26	-	60	12.5	10	13	4	2	¥ 8,760
M16 × 1.5	P2	TNMQ016O120	1.5P	200	26	-	60	12.5	10	13	4	2	¥ 11,500**
M16 × 1.5	P3	TNMR016O515	5P	150	26	-	60	12.5	10	13	4	2	¥ 8,760**
M16 × 1.5	P3	TNMR016O115	1.5P	150	26	-	60	12.5	10	13	4	2	¥ 8,760**
M16 × 1	P2	TNMQ016M515	5P	150	26	-	60	12.5	10	13	4	2	¥ 12,100**
M16 × 1	P2	TNMQ016M115	1.5P	150	26	-	60	12.5	10	13	4	2	¥ 12,100**
M18 × 2.5	P3	TNMR018R515	5P	150	33	-	70	14	11	14	4	2	¥ 11,900**
M18 × 2.5	P3	TNMR018R520	5P	200	33	-	70	14	11	14	4	2	¥ 15,100**
M18 × 2.5	P3	TNMR018R525	5P	250	33	-	70	14	11	14	4	2	¥ 18,400**
M18 × 2.5	P3	TNMR018R115	1.5P	150	33	-	70	14	11	14	4	2	¥ 11,900**
M18 × 2.5	P3	TNMR018R120	1.5P	200	33	-	70	14	11	14	4	2	¥ 15,100**
M18 × 2.5	P3	TNMR018R125	1.5P	250	33	-	70	14	11	14	4	2	¥ 18,400**
M18 × 2.5	P4	TNMS018R515	5P	150	33	-	70	14	11	14	4	2	¥ 11,900**
M18 × 2.5	P4	TNMS018R520	5P	200	33	-	70	14	11	14	4	2	¥ 15,100**
M18 × 2.5	P4	TNMS018R115	1.5P	150	33	-	70	14	11	14	4	2	¥ 11,900**
M18 × 2.5	P4	TNMS018R120	1.5P	200	33	-	70	14	11	14	4	2	¥ 15,100**
M18 × 2	P3	TNMR018Q520	5P	200	33	-	70	14	11	14	4	2	¥ 15,100**

Think threads with
YAMAWA

** = Specified Distribution Items. Made to order products.
For improvement, spec may change without advance notice.

Overall length	Thread length	Thread + Neck length	Shank length	Shank dia.	Size of square	Length of square
L	ℓ	ℓn	ℓs	Ds	K	ℓk

LS-HT Long Shank Hand Taps

Size	Class	Code	Chamfer	L (mm)	ℓ (mm)	ℓn (mm)	ℓs (mm)	Ds (mm)	K (mm)	ℓk (mm)	No. of flutes	TYPE	MSRP
M18 × 2	P3	TNMR018Q120	1.5P	200	33	-	70	14	11	14	4	2	¥ 15,100*
M18 × 1.5	P2	TNMQ0180515	5P	150	33	-	70	14	11	14	4	2	¥ 11,900
M18 × 1.5	P2	TNMQ0180520	5P	200	33	-	70	14	11	14	4	2	¥ 15,100*
M18 × 1.5	P2	TNMQ0180115	1.5P	150	33	-	70	14	11	14	4	2	¥ 11,900
M18 × 1.5	P2	TNMQ0180120	1.5P	200	33	-	70	14	11	14	4	2	¥ 15,100*
M18 × 1.5	P3	TNMR0180515	5P	150	33	-	70	14	11	14	4	2	¥ 11,900*
M18 × 1.5	P3	TNMR0180115	1.5P	150	33	-	70	14	11	14	4	2	¥ 11,900*
M20 × 2.5	P3	TNMR020R515	5P	150	33	-	70	15	12	15	4	3	¥ 15,300
M20 × 2.5	P3	TNMR020R520	5P	200	33	-	70	15	12	15	4	3	¥ 19,100
M20 × 2.5	P3	TNMR020R525	5P	250	33	-	70	15	12	15	4	3	¥ 24,400*
M20 × 2.5	P3	TNMR020R115	1.5P	150	33	-	70	15	12	15	4	3	¥ 15,300
M20 × 2.5	P3	TNMR020R120	1.5P	200	33	-	70	15	12	15	4	3	¥ 19,100
M20 × 2.5	P3	TNMR020R125	1.5P	250	33	-	70	15	12	15	4	3	¥ 24,400*
M20 × 2.5	P4	TNMS020R515	5P	150	33	-	70	15	12	15	4	3	¥ 15,300*
M20 × 2.5	P4	TNMS020R520	5P	200	33	-	70	15	12	15	4	3	¥ 19,100*
M20 × 2.5	P4	TNMS020R115	1.5P	150	33	-	70	15	12	15	4	3	¥ 15,300*
M20 × 2.5	P4	TNMS020R120	1.5P	200	33	-	70	15	12	15	4	3	¥ 19,100*
M20 × 2	P3	TNMR020Q520	5P	200	33	-	70	15	12	15	4	3	¥ 19,100*
M20 × 2	P3	TNMR020Q120	1.5P	200	33	-	70	15	12	15	4	3	¥ 19,100*
M20 × 1.5	P3	TNMR0200515	5P	150	33	-	70	15	12	15	4	3	¥ 15,300
M20 × 1.5	P3	TNMR0200520	5P	200	33	-	70	15	12	15	4	3	¥ 19,100*
M20 × 1.5	P3	TNMR0200115	1.5P	150	33	-	70	15	12	15	4	3	¥ 15,300
M20 × 1.5	P3	TNMR0200120	1.5P	200	33	-	70	15	12	15	4	3	¥ 19,100*
M20 × 1.5	P4	TNMS0200515	5P	150	33	-	70	15	12	15	4	3	¥ 15,300*
M20 × 1.5	P4	TNMS0200115	1.5P	150	33	-	70	15	12	15	4	3	¥ 15,300*
M22 × 2.5	P3	TNMR022R515	5P	150	33	-	70	17	13	16	4	3	¥ 17,100*
M22 × 2.5	P3	TNMR022R520	5P	200	33	-	70	17	13	16	4	3	¥ 21,300*
M22 × 2.5	P3	TNMR022R525	5P	250	33	-	70	17	13	16	4	3	¥ 26,200*
M22 × 2.5	P3	TNMR022R115	1.5P	150	33	-	70	17	13	16	4	3	¥ 17,100*
M22 × 2.5	P3	TNMR022R120	1.5P	200	33	-	70	17	13	16	4	3	¥ 21,300*
M22 × 2.5	P3	TNMR022R125	1.5P	250	33	-	70	17	13	16	4	3	¥ 26,200*
M22 × 2.5	P4	TNMS022R515	5P	150	33	-	70	17	13	16	4	3	¥ 17,100*
M22 × 2.5	P4	TNMS022R520	5P	200	33	-	70	17	13	16	4	3	¥ 21,300*
M22 × 2.5	P4	TNMS022R115	1.5P	150	33	-	70	17	13	16	4	3	¥ 17,100*
M22 × 2.5	P4	TNMS022R120	1.5P	200	33	-	70	17	13	16	4	3	¥ 21,300*
M22 × 2	P3	TNMR022Q520	5P	200	33	-	70	17	13	16	4	3	¥ 21,300*
M22 × 2	P3	TNMR022Q120	1.5P	200	33	-	70	17	13	16	4	3	¥ 21,300*
M22 × 1.5	P3	TNMR0220515	5P	150	33	-	70	17	13	16	4	3	¥ 17,100*
M22 × 1.5	P3	TNMR0220520	5P	200	33	-	70	17	13	16	4	3	¥ 21,300*
M22 × 1.5	P3	TNMR0220115	1.5P	150	33	-	70	17	13	16	4	3	¥ 17,100*
M22 × 1.5	P3	TNMR0220120	1.5P	200	33	-	70	17	13	16	4	3	¥ 21,300*
M24 × 3	P3	TNMR024S515	5P	150	39	-	80	19	15	18	4	3	¥ 20,000
M24 × 3	P3	TNMR024S520	5P	200	39	-	80	19	15	18	4	3	¥ 23,900
M24 × 3	P3	TNMR024S525	5P	250	39	-	80	19	15	18	4	3	¥ 30,300*
M24 × 3	P3	TNMR024S115	1.5P	150	39	-	80	19	15	18	4	3	¥ 20,000
M24 × 3	P3	TNMR024S120	1.5P	200	39	-	80	19	15	18	4	3	¥ 23,900
M24 × 3	P3	TNMR024S125	1.5P	250	39	-	80	19	15	18	4	3	¥ 30,300*
M24 × 3	P4	TNMS024S515	5P	150	39	-	80	19	15	18	4	3	¥ 20,000*
M24 × 3	P4	TNMS024S520	5P	200	39	-	80	19	15	18	4	3	¥ 23,900*
M24 × 3	P4	TNMS024S115	1.5P	150	39	-	80	19	15	18	4	3	¥ 20,000*

Spiral Fluted Taps
(for blind hole) ①

Spiral Fluted Taps
(for through hole) ②

Spiral Pointed Taps
(for through hole) ③

Hand Taps ④

Cemented Carbide Taps ⑤

Roll Taps ⑥

Special Thread Taps
Simple inspection tools ⑦

Pipe Taps ⑧

Thread Mills ⑨

Dies ⑩

Center Drills
Centering Tools ⑪

* = Specified Distribution Items. Made to order products.
For improvement, spec may change without advance notice.

4 Hand Tap Series

Overall length	Thread length	Thread + Neck length	Shank length	Shank dia.	Size of square	Length of square
L	ℓ	ℓn	ℓs	Ds	K	ℓk

JIS

LS-HT Long Shank Hand Taps

Size	Class	Code	Chamfer	L (mm)	ℓ (mm)	ℓn (mm)	ℓs (mm)	Ds (mm)	K (mm)	ℓk (mm)	No. of flutes	TYPE	MSRP
M24 × 3	P4	TNMS024S120	1.5P	200	39	-	80	19	15	18	4	3	¥ 23,900 ^{**}
M24 × 2	P3	TNMR024Q520	5P	200	39	-	80	19	15	18	4	3	¥ 23,900 ^{**}
M24 × 2	P3	TNMR024Q120	1.5P	200	39	-	80	19	15	18	4	3	¥ 23,900 ^{**}
M24 × 1.5	P3	TNMR024O515	5P	150	39	-	80	19	15	18	4	3	¥ 20,000
M24 × 1.5	P3	TNMR024O520	5P	200	39	-	80	19	15	18	4	3	¥ 23,900 ^{**}
M24 × 1.5	P3	TNMR024O115	1.5P	150	39	-	80	19	15	18	4	3	¥ 20,000
M24 × 1.5	P3	TNMR024O120	1.5P	200	39	-	80	19	15	18	4	3	¥ 23,900 ^{**}
M27 × 3	P3	TNMR027S520	5P	200	39	-	80	20	15	18	4	3	¥ 27,000 ^{**}
M27 × 3	P3	TNMR027S525	5P	250	39	-	80	20	15	18	4	3	¥ 35,000 ^{**}
M27 × 3	P3	TNMR027S120	1.5P	200	39	-	80	20	15	18	4	3	¥ 27,000 ^{**}
M27 × 3	P3	TNMR027S125	1.5P	250	39	-	80	20	15	18	4	3	¥ 35,000 ^{**}
M27 × 2	P3	TNMR027Q520	5P	200	39	-	80	20	15	18	4	3	¥ 27,000 ^{**}
M27 × 2	P3	TNMR027Q525	5P	250	39	-	80	20	15	18	4	3	¥ 35,000 ^{**}
M27 × 2	P3	TNMR027Q120	1.5P	200	39	-	80	20	15	18	4	3	¥ 27,000 ^{**}
M27 × 2	P3	TNMR027Q125	1.5P	250	39	-	80	20	15	18	4	3	¥ 35,000 ^{**}
M27 × 1.5	P3	TNMR027O520	5P	200	39	-	80	20	15	18	4	3	¥ 27,000 ^{**}
M27 × 1.5	P3	TNMR027O525	5P	250	39	-	80	20	15	18	4	3	¥ 35,000 ^{**}
M27 × 1.5	P3	TNMR027O120	1.5P	200	39	-	80	20	15	18	4	3	¥ 27,000 ^{**}
M27 × 1.5	P3	TNMR027O125	1.5P	250	39	-	80	20	15	18	4	3	¥ 35,000 ^{**}
M30 × 3.5	P4	TNMS030T520	5P	200	46	-	80	23	17	20	4	3	¥ 34,700 ^{**}
M30 × 3.5	P4	TNMS030T525	5P	250	46	-	80	23	17	20	4	3	¥ 44,000 ^{**}
M30 × 3.5	P4	TNMS030T530	5P	300	46	-	80	23	17	20	4	3	¥ 50,600 ^{**}
M30 × 3.5	P4	TNMS030T120	1.5P	200	46	-	80	23	17	20	4	3	¥ 34,700 ^{**}
M30 × 3.5	P4	TNMS030T125	1.5P	250	46	-	80	23	17	20	4	3	¥ 44,000 ^{**}
M30 × 3.5	P4	TNMS030T130	1.5P	300	46	-	80	23	17	20	4	3	¥ 50,600 ^{**}
M30 × 3	P3	TNMR030S520	5P	200	46	-	80	23	17	20	4	3	¥ 34,700 ^{**}
M30 × 3	P3	TNMR030S525	5P	250	46	-	80	23	17	20	4	3	¥ 44,000 ^{**}
M30 × 3	P3	TNMR030S120	1.5P	200	46	-	80	23	17	20	4	3	¥ 34,700 ^{**}
M30 × 3	P3	TNMR030S125	1.5P	250	46	-	80	23	17	20	4	3	¥ 44,000 ^{**}
M30 × 2	P3	TNMR030Q520	5P	200	46	-	80	23	17	20	4	3	¥ 34,700 ^{**}
M30 × 2	P3	TNMR030Q525	5P	250	46	-	80	23	17	20	4	3	¥ 44,000 ^{**}
M30 × 2	P3	TNMR030Q120	1.5P	200	46	-	80	23	17	20	4	3	¥ 34,700 ^{**}
M30 × 2	P3	TNMR030Q125	1.5P	250	46	-	80	23	17	20	4	3	¥ 44,000 ^{**}
M30 × 1.5	P3	TNMR030O520	5P	200	46	-	80	23	17	20	4	3	¥ 34,700 ^{**}
M30 × 1.5	P3	TNMR030O525	5P	250	46	-	80	23	17	20	4	3	¥ 44,000 ^{**}
M30 × 1.5	P3	TNMR030O120	1.5P	200	46	-	80	23	17	20	4	3	¥ 34,700 ^{**}
M30 × 1.5	P3	TNMR030O125	1.5P	250	46	-	80	23	17	20	4	3	¥ 44,000 ^{**}
M33 × 3.5	P4	L25033T5-S	5P	250	51	-	80	25	19	22	4	3	¥ 50,500 ^{**}
M33 × 3.5	P4	L25033T1-S	1.5P	250	51	-	80	25	19	22	4	3	¥ 50,500 ^{**}
M33 × 3	P3	L25033S5-R	5P	250	51	-	80	25	19	22	4	3	¥ 50,500 ^{**}
M33 × 3	P3	L25033S1-R	1.5P	250	51	-	80	25	19	22	4	3	¥ 50,500 ^{**}
M33 × 2	P3	L25033Q5-R	5P	250	45	-	80	25	19	22	4	3	¥ 50,500 ^{**}
M33 × 2	P3	L25033Q1-R	1.5P	250	45	-	80	25	19	22	4	3	¥ 50,500 ^{**}
M33 × 1.5	P3	L25033O5-R	5P	250	45	-	80	25	19	22	4	3	¥ 50,500 ^{**}
M33 × 1.5	P3	L25033O1-R	1.5P	250	45	-	80	25	19	22	4	3	¥ 50,500 ^{**}
M36 × 4	P4	L25036U5-S	5P	250	57	-	100	28	21	24	4	3	¥ 52,500 ^{**}
M36 × 4	P4	L30036U5-S	5P	300	57	-	100	28	21	24	4	3	¥ 60,800 ^{**}
M36 × 4	P4	L25036U1-S	1.5P	250	57	-	100	28	21	24	4	3	¥ 52,500 ^{**}
M36 × 4	P4	L30036U1-S	1.5P	300	57	-	100	28	21	24	4	3	¥ 60,800 ^{**}
M36 × 3	P3	L25036S5-R	5P	250	57	-	100	28	21	24	4	3	¥ 52,500 ^{**}

① Spiral Fluted Taps (for blind hole)

② Spiral Fluted Taps (for through hole)

③ Spiral Pointed Taps (for through hole)

④ Hand Taps

⑤ Cemented Carbide Taps

⑥ Roll Taps

⑦ Special Thread Taps (Simple inspection tools)

⑧ Pipe Taps

⑨ Thread Mills

⑩ Dies

⑪ Center Drills (Centering Tools)



※ = Specified Distribution Items. Made to order products.
For improvement, spec may change without advance notice.

Overall length	Thread length	Thread + Neck length	Shank length	Shank dia.	Size of square	Length of square
L	ℓ	ℓn	ℓs	Ds	K	ℓk

LS-HT Long Shank Hand Taps

Size	Class	Code	Chamfer	L (mm)	ℓ (mm)	ℓn (mm)	ℓs (mm)	Ds (mm)	K (mm)	ℓk (mm)	No. of flutes	TYPE	MSRP
M36 × 3	P3	L25036S1-R	1.5P	250	57	-	100	28	21	24	4	3	¥ 52,500*
M36 × 2	P3	L25036Q5-R	5P	250	45	-	100	28	21	24	4	3	¥ 52,500*
M36 × 2	P3	L25036Q1-R	1.5P	250	45	-	100	28	21	24	4	3	¥ 52,500*
M36 × 1.5	P3	L25036O5-R	5P	250	45	-	100	28	21	24	4	3	¥ 52,500*
M36 × 1.5	P3	L25036O1-R	1.5P	250	45	-	100	28	21	24	4	3	¥ 52,500*
M39 × 4	P4	L30039U5-S	5P	300	60	-	100	30	23	26	4	3	¥ 66,000*
M39 × 4	P4	L30039U1-S	1.5P	300	60	-	100	30	23	26	4	3	¥ 66,000*
M39 × 3	P3	L25039S5-R	5P	250	60	-	100	30	23	26	4	3	¥ 62,100*
M39 × 3	P3	L25039S1-R	1.5P	250	60	-	100	30	23	26	4	3	¥ 62,100*
M39 × 2	P3	L25039Q5-R	5P	250	45	-	100	30	23	26	4	3	¥ 62,100*
M39 × 2	P3	L25039Q1-R	1.5P	250	45	-	100	30	23	26	4	3	¥ 62,100*
M39 × 1.5	P3	L25039O5-R	5P	250	45	-	100	30	23	26	4	3	¥ 62,100*
M39 × 1.5	P3	L25039O1-R	1.5P	250	45	-	100	30	23	26	4	3	¥ 62,100*
M40 × 3	P3	L25040S5-R	5P	250	60	-	100	30	23	26	4	3	¥ 63,200*
M40 × 3	P3	L30040S5-R	5P	300	60	-	100	30	23	26	4	3	¥ 76,100*
M40 × 3	P3	L25040S1-R	1.5P	250	60	-	100	30	23	26	4	3	¥ 63,200*
M40 × 3	P3	L30040S1-R	1.5P	300	60	-	100	30	23	26	4	3	¥ 76,100*
M40 × 2	P3	L25040Q5-R	5P	250	45	-	100	30	23	26	4	3	¥ 63,200*
M40 × 2	P3	L30040Q5-R	5P	300	45	-	100	30	23	26	4	3	¥ 76,100*
M40 × 2	P3	L25040Q1-R	1.5P	250	45	-	100	30	23	26	4	3	¥ 63,200*
M40 × 2	P3	L30040Q1-R	1.5P	300	45	-	100	30	23	26	4	3	¥ 76,100*
M40 × 1.5	P3	L25040O5-R	5P	250	45	-	100	30	23	26	4	3	¥ 63,200*
M40 × 1.5	P3	L30040O5-R	5P	300	45	-	100	30	23	26	4	3	¥ 76,100*
M40 × 1.5	P3	L25040O1-R	1.5P	250	45	-	100	30	23	26	4	3	¥ 63,200*
M40 × 1.5	P3	L30040O1-R	1.5P	300	45	-	100	30	23	26	4	3	¥ 76,100*
M42 × 4.5	P4	L25042V5-S	5P	250	60	-	100	32	26	30	4	3	¥ 70,300*
M42 × 4.5	P4	L30042V5-S	5P	300	60	-	100	32	26	30	4	3	¥ 80,900*
M42 × 4.5	P4	L25042V1-S	1.5P	250	60	-	100	32	26	30	4	3	¥ 70,300*
M42 × 4.5	P4	L30042V1-S	1.5P	300	60	-	100	32	26	30	4	3	¥ 80,900*
M42 × 3	P3	L25042S5-R	5P	250	60	-	100	32	26	30	4	3	¥ 70,300*
M42 × 3	P3	L30042S5-R	5P	300	60	-	100	32	26	30	4	3	¥ 80,900*
M42 × 3	P3	L25042S1-R	1.5P	250	60	-	100	32	26	30	4	3	¥ 70,300*
M42 × 3	P3	L30042S1-R	1.5P	300	60	-	100	32	26	30	4	3	¥ 80,900*
M42 × 2	P3	L25042Q5-R	5P	250	45	-	100	32	26	30	4	3	¥ 70,300*
M42 × 2	P3	L30042Q5-R	5P	300	45	-	100	32	26	30	4	3	¥ 80,900*
M42 × 2	P3	L25042Q1-R	1.5P	250	45	-	100	32	26	30	4	3	¥ 70,300*
M42 × 2	P3	L30042Q1-R	1.5P	300	45	-	100	32	26	30	4	3	¥ 80,900*
M42 × 1.5	P3	L25042O5-R	5P	250	45	-	100	32	26	30	4	3	¥ 70,300*
M42 × 1.5	P3	L30042O5-R	5P	300	45	-	100	32	26	30	4	3	¥ 80,900*
M42 × 1.5	P3	L25042O1-R	1.5P	250	45	-	100	32	26	30	4	3	¥ 70,300*
M42 × 1.5	P3	L30042O1-R	1.5P	300	45	-	100	32	26	30	4	3	¥ 80,900*
M45 × 4.5	P4	L30045V5-S	5P	300	67	-	100	35	26	30	4	3	¥ 91,300*
M45 × 4.5	P4	L30045V1-S	1.5P	300	67	-	100	35	26	30	4	3	¥ 91,300*
M45 × 3	P3	L30045S5-R	5P	300	67	-	100	35	26	30	4	3	¥ 91,300*
M45 × 3	P3	L30045S1-R	1.5P	300	67	-	100	35	26	30	4	3	¥ 91,300*
M45 × 2	P3	L30045Q5-R	5P	300	45	-	100	35	26	30	4	3	¥ 91,300*
M45 × 2	P3	L30045Q1-R	1.5P	300	45	-	100	35	26	30	4	3	¥ 91,300*
M45 × 1.5	P3	L30045O5-R	5P	300	45	-	100	35	26	30	4	3	¥ 91,300*
M45 × 1.5	P3	L30045O1-R	1.5P	300	45	-	100	35	26	30	4	3	¥ 91,300*
M48 × 5	P4	L30048W5-S	5P	300	67	-	120	38	29	32	4	3	¥ 98,400*

* = Specified Distribution Items. Made to order products.
For improvement, spec may change without advance notice.

Think threads with
YAMAWA

4

JIS

Spiral Fluted Taps
(for blind hole) ①

Spiral Fluted Taps
(for through hole) ②

Spiral Pointed Taps
(for through hole) ③

Hand Taps ④

Cemented Carbide Taps ⑤

Roll Taps ⑥

Special Thread Taps
Simple inspection tools ⑦

Pipe Taps ⑧

Thread Mills ⑨

Dies ⑩

Center Drills
Centering Tools ⑪

JIS ④-76

4 Hand Tap Series

Overall length	Thread length	Thread + Neck length	Shank length	Shank dia.	Size of square	Length of square
L	ℓ	ℓn	ℓs	Ds	K	ℓk

JIS

LS-HT Long Shank Hand Taps

Size	Class	Code	Chamfer	L (mm)	ℓ (mm)	ℓn (mm)	ℓs (mm)	Ds (mm)	K (mm)	ℓk (mm)	No. of flutes	TYPE	MSRP
M48 × 5	P4	L30048W1-S	1.5P	300	67	-	120	38	29	32	4	3	¥ 98,400 ^{**}
M48 × 3	P3	L30048S5-R	5P	300	67	-	120	38	29	32	4	3	¥ 98,400 ^{**}
M48 × 3	P3	L30048S1-R	1.5P	300	67	-	120	38	29	32	4	3	¥ 98,400 ^{**}
M48 × 2	P3	L30048Q5-R	5P	300	45	-	120	38	29	32	4	3	¥ 98,400 ^{**}
M48 × 2	P3	L30048Q1-R	1.5P	300	45	-	120	38	29	32	4	3	¥ 98,400 ^{**}
M48 × 1.5	P3	L30048O5-R	5P	300	45	-	120	38	29	32	4	3	¥ 98,400 ^{**}
M48 × 1.5	P3	L30048O1-R	1.5P	300	45	-	120	38	29	32	4	3	¥ 98,400 ^{**}
For Unified Threads													
1/4-20UNC	P2	TNMQU04N515	5P	150	15	26	40	6	4.5	7	3	1	¥ 3,510 ^{**}
1/4-20UNC	P2	TNMQU04N520	5P	200	15	26	40	6	4.5	7	3	1	¥ 4,900 ^{**}
1/4-20UNC	P2	TNMQU04N115	1.5P	150	15	26	40	6	4.5	7	3	1	¥ 3,510 ^{**}
1/4-20UNC	P2	TNMQU04N120	1.5P	200	15	26	40	6	4.5	7	3	1	¥ 4,900 ^{**}
1/4-28UNF	P2	TNMQU04K515	5P	150	15	26	40	6	4.5	7	3	1	¥ 3,510 ^{**}
1/4-28UNF	P2	TNMQU04K520	5P	200	15	26	40	6	4.5	7	3	1	¥ 4,900 ^{**}
1/4-28UNF	P2	TNMQU04K115	1.5P	150	15	26	40	6	4.5	7	3	1	¥ 3,510 ^{**}
1/4-28UNF	P2	TNMQU04K120	1.5P	200	15	26	40	6	4.5	7	3	1	¥ 4,900 ^{**}
5/16-18UNC	P2	TNMQU05O515	5P	150	19	-	50	6.2	5	8	4	2	¥ 4,410 ^{**}
5/16-18UNC	P2	TNMQU05O520	5P	200	19	-	50	6.2	5	8	4	2	¥ 6,670 ^{**}
5/16-18UNC	P2	TNMQU05O115	1.5P	150	19	-	50	6.2	5	8	4	2	¥ 4,410 ^{**}
5/16-18UNC	P2	TNMQU05O120	1.5P	200	19	-	50	6.2	5	8	4	2	¥ 6,670 ^{**}
5/16-24UNF	P2	TNMQU05M515	5P	150	19	-	50	6.2	5	8	4	2	¥ 4,410 ^{**}
5/16-24UNF	P2	TNMQU05M520	5P	200	19	-	50	6.2	5	8	4	2	¥ 6,670 ^{**}
5/16-24UNF	P2	TNMQU05M115	1.5P	150	19	-	50	6.2	5	8	4	2	¥ 4,410 ^{**}
5/16-24UNF	P2	TNMQU05M120	1.5P	200	19	-	50	6.2	5	8	4	2	¥ 6,670 ^{**}
3/8-16UNC	P2	TNMQU06P515	5P	150	23	-	50	7	5.5	8	4	2	¥ 5,220 ^{**}
3/8-16UNC	P2	TNMQU06P520	5P	200	23	-	50	7	5.5	8	4	2	¥ 7,560 ^{**}
3/8-16UNC	P2	TNMQU06P115	1.5P	150	23	-	50	7	5.5	8	4	2	¥ 5,220 ^{**}
3/8-16UNC	P2	TNMQU06P120	1.5P	200	23	-	50	7	5.5	8	4	2	¥ 7,560 ^{**}
3/8-24UNF	P2	TNMQU06M515	5P	150	23	-	50	7	5.5	8	4	2	¥ 5,220 ^{**}
3/8-24UNF	P2	TNMQU06M520	5P	200	23	-	50	7	5.5	8	4	2	¥ 7,560 ^{**}
3/8-24UNF	P2	TNMQU06M115	1.5P	150	23	-	50	7	5.5	8	4	2	¥ 5,220 ^{**}
3/8-24UNF	P2	TNMQU06M120	1.5P	200	23	-	50	7	5.5	8	4	2	¥ 7,560 ^{**}
7/16-14UNC	P3	TNMRU07Q515	5P	150	26	-	50	8.5	6.5	9	4	2	¥ 6,180 ^{**}
7/16-14UNC	P3	TNMRU07Q520	5P	200	26	-	50	8.5	6.5	9	4	2	¥ 8,980 ^{**}
7/16-14UNC	P3	TNMRU07Q115	1.5P	150	26	-	50	8.5	6.5	9	4	2	¥ 6,180 ^{**}
7/16-20UNF	P2	TNMQU07N515	5P	150	26	-	50	8.5	6.5	9	4	2	¥ 6,180 ^{**}
7/16-20UNF	P2	TNMQU07N520	5P	200	26	-	50	8.5	6.5	9	4	2	¥ 8,980 ^{**}
7/16-20UNF	P2	TNMQU07N115	1.5P	150	26	-	50	8.5	6.5	9	4	2	¥ 6,180 ^{**}
7/16-20UNF	P2	TNMQU07N120	1.5P	200	26	-	50	8.5	6.5	9	4	2	¥ 8,980 ^{**}
1/2-13UNC	P3	TNMRU08R515	5P	150	26	-	60	10.5	8	11	4	2	¥ 6,550 ^{**}
1/2-13UNC	P3	TNMRU08R520	5P	200	26	-	60	10.5	8	11	4	2	¥ 9,260 ^{**}
1/2-13UNC	P3	TNMRU08R115	1.5P	150	26	-	60	10.5	8	11	4	2	¥ 6,550 ^{**}
1/2-13UNC	P3	TNMRU08R120	1.5P	200	26	-	60	10.5	8	11	4	2	¥ 9,260 ^{**}
1/2-20UNF	P2	TNMQU08N515	5P	150	26	-	60	10.5	8	11	4	2	¥ 6,550 ^{**}
1/2-20UNF	P2	TNMQU08N520	5P	200	26	-	60	10.5	8	11	4	2	¥ 9,260 ^{**}
1/2-20UNF	P2	TNMQU08N115	1.5P	150	26	-	60	10.5	8	11	4	2	¥ 6,550 ^{**}
1/2-20UNF	P2	TNMQU08N120	1.5P	200	26	-	60	10.5	8	11	4	2	¥ 9,260 ^{**}
9/16-18UNF	P2	TNMQU09O515	5P	150	26	-	60	12.5	10	13	4	2	¥ 8,180 ^{**}
9/16-18UNF	P2	TNMQU09O115	1.5P	150	26	-	60	12.5	10	13	4	2	¥ 8,180 ^{**}
5/8-11UNC	P3	TNMRU10U515	5P	150	26	-	60	12.5	10	13	4	2	¥ 8,900 ^{**}

① Spiral Fluted Taps (for blind hole)

② Spiral Fluted Taps (for through hole)

③ Spiral Pointed Taps (for through hole)

④ Hand Taps

⑤ Cemented Carbide Taps

⑥ Roll Taps

⑦ Special Thread Taps (Simple inspection tools)

⑧ Pipe Taps

⑨ Thread Mills

⑩ Dies

⑪ Center Drills (Centering Tools)



※ = Specified Distribution Items. Made to order products.
For improvement, spec may change without advance notice.

Overall length	Thread length	Thread + Neck length	Shank length	Shank dia.	Size of square	Length of square
L	ℓ	ℓn	ℓs	Ds	K	ℓk

LS-HT Long Shank Hand Taps

Size	Class	Code	Chamfer	L (mm)	ℓ (mm)	ℓn (mm)	ℓs (mm)	Ds (mm)	K (mm)	ℓk (mm)	No. of flutes	TYPE	MSRP
5/8-11UNC	P3	TNMRU10U520	5P	200	26	-	60	12.5	10	13	4	2	¥ 11,700*
5/8-11UNC	P3	TNMRU10U115	1.5P	150	26	-	60	12.5	10	13	4	2	¥ 8,900*
5/8-11UNC	P3	TNMRU10U120	1.5P	200	26	-	60	12.5	10	13	4	2	¥ 11,700*
5/8-18UNF	P2	TNMQU100515	5P	150	26	-	60	12.5	10	13	4	2	¥ 8,900*
5/8-18UNF	P2	TNMQU100115	1.5P	150	26	-	60	12.5	10	13	4	2	¥ 8,900*
3/4-10UNC	P3	TNMRU12V515	5P	150	33	-	70	15	12	15	4	3	¥ 15,600*
3/4-10UNC	P3	TNMRU12V520	5P	200	33	-	70	15	12	15	4	3	¥ 20,000*
3/4-10UNC	P3	TNMRU12V115	1.5P	150	33	-	70	15	12	15	4	3	¥ 15,600*
3/4-10UNC	P3	TNMRU12V120	1.5P	200	33	-	70	15	12	15	4	3	¥ 20,000*
3/4-16UNF	P3	TNMRU12P515	5P	150	33	-	70	15	12	15	4	3	¥ 15,600*
3/4-16UNF	P3	TNMRU12P520	5P	200	33	-	70	15	12	15	4	3	¥ 20,000*
3/4-16UNF	P3	TNMRU12P115	1.5P	150	33	-	70	15	12	15	4	3	¥ 15,600*
3/4-16UNF	P3	TNMRU12P120	1.5P	200	33	-	70	15	12	15	4	3	¥ 20,000*
7/8-9UNC	P3	TNMRU14W520	5P	200	33	-	70	17	13	16	4	3	¥ 21,300*
7/8-9UNC	P3	TNMRU14W120	1.5P	200	33	-	70	17	13	16	4	3	¥ 21,300*
7/8-14UNF	P3	TNMRU14Q115	1.5P	150	33	-	70	17	13	16	4	3	¥ 17,400*
7/8-14UNF	P3	TNMRU14Q120	1.5P	200	33	-	70	17	13	16	4	3	¥ 21,300*
1-8UNC	P3	TNMRU16X515	5P	150	39	-	80	19	15	18	4	3	¥ 20,600*
1-8UNC	P3	TNMRU16X520	5P	200	39	-	80	19	15	18	4	3	¥ 25,700*
1-8UNC	P3	TNMRU16X525	5P	250	39	-	80	19	15	18	4	3	¥ 30,600*
1-8UNC	P3	TNMRU16X115	1.5P	150	39	-	80	19	15	18	4	3	¥ 20,600*
1-8UNC	P3	TNMRU16X120	1.5P	200	39	-	80	19	15	18	4	3	¥ 25,700*
1-8UNC	P3	TNMRU16X125	1.5P	250	39	-	80	19	15	18	4	3	¥ 30,600*
1-12UNF	P3	TNMRU16S515	5P	150	39	-	80	19	15	18	4	3	¥ 20,600*
1-12UNF	P3	TNMRU16S115	1.5P	150	39	-	80	19	15	18	4	3	¥ 20,600*
For Whitworth Threads													
1/4W20	P2	TNMQW04N515	5P	150	15	26	40	6	4.5	7	3	1	¥ 3,510*
1/4W20	P2	TNMQW04N115	1.5P	150	15	26	40	6	4.5	7	3	1	¥ 3,510*
5/16W18	P2	TNMQW05O515	5P	150	19	-	50	6.2	5	8	4	2	¥ 4,410*
5/16W18	P2	TNMQW05O520	5P	200	19	-	50	6.2	5	8	4	2	¥ 6,670*
5/16W18	P2	TNMQW05O115	1.5P	150	19	-	50	6.2	5	8	4	2	¥ 4,410*
5/16W18	P2	TNMQW05O120	1.5P	200	19	-	50	6.2	5	8	4	2	¥ 6,670*
3/8W16	P2	TNMQW06P515	5P	150	23	-	50	7	5.5	8	4	2	¥ 5,220*
3/8W16	P2	TNMQW06P520	5P	200	23	-	50	7	5.5	8	4	2	¥ 7,560*
3/8W16	P2	TNMQW06P115	1.5P	150	23	-	50	7	5.5	8	4	2	¥ 5,220*
3/8W16	P2	TNMQW06P120	1.5P	200	23	-	50	7	5.5	8	4	2	¥ 7,560*
7/16W14	P3	TNMRW07Q515	5P	150	26	-	50	8.5	6.5	9	4	2	¥ 6,180*
7/16W14	P3	TNMRW07Q115	1.5P	150	26	-	50	8.5	6.5	9	4	2	¥ 6,180*
1/2W12	P3	TNMRW08S515	5P	150	26	-	60	10.5	8	11	4	2	¥ 6,550*
1/2W12	P3	TNMRW08S520	5P	200	26	-	60	10.5	8	11	4	2	¥ 9,260*
1/2W12	P3	TNMRW08S115	1.5P	150	26	-	60	10.5	8	11	4	2	¥ 6,550*
1/2W12	P3	TNMRW08S120	1.5P	200	26	-	60	10.5	8	11	4	2	¥ 9,260*
5/8W11	P3	TNMRW10U515	5P	150	26	-	60	12.5	10	13	4	2	¥ 8,900*
5/8W11	P3	TNMRW10U520	5P	200	26	-	60	12.5	10	13	4	2	¥ 11,700*
5/8W11	P3	TNMRW10U115	1.5P	150	26	-	60	12.5	10	13	4	2	¥ 8,900*
5/8W11	P3	TNMRW10U120	1.5P	200	26	-	60	12.5	10	13	4	2	¥ 11,700*
3/4W10	P3	TNMRW12V515	5P	150	33	-	70	15	12	15	4	3	¥ 15,600*
3/4W10	P3	TNMRW12V520	5P	200	33	-	70	15	12	15	4	3	¥ 20,000*
3/4W10	P3	TNMRW12V115	1.5P	150	33	-	70	15	12	15	4	3	¥ 15,600*
3/4W10	P3	TNMRW12V120	1.5P	200	33	-	70	15	12	15	4	3	¥ 20,000*

- ① Spiral Fluted Taps (for blind hole)
- ② Spiral Fluted Taps (for through hole)
- ③ Spiral Pointed Taps (for through hole)
- ④ Hand Taps
- ⑤ Cemented Carbide Taps
- ⑥ Roll Taps
- ⑦ Special Thread Taps (Simple inspection tools)
- ⑧ Pipe Taps
- ⑨ Thread Mills
- ⑩ Dies
- ⑪ Center Drills (Centering Tools)

* = Specified Distribution Items. Made to order products. For improvement, spec may change without advance notice.



4 Hand Tap Series

Overall length	Thread length	Thread + Neck length	Shank length	Shank dia.	Size of square	Length of square
L	ℓ	ℓn	ℓs	Ds	K	ℓk

JIS

LS-HT Long Shank Hand Taps

Size	Class	Code	Chamfer	L (mm)	ℓ (mm)	ℓn (mm)	ℓs (mm)	Ds (mm)	K (mm)	ℓk (mm)	No. of flutes	TYPE	MSRP
7/8W9	P3	TNMRW14W520	5P	200	33	-	70	17	13	16	4	3	¥ 21,300*
7/8W9	P3	TNMRW14W120	1.5P	200	33	-	70	17	13	16	4	3	¥ 21,300*
1 W8	P3	TNMRW16X515	5P	150	39	-	80	19	15	18	4	3	¥ 20,600*
1 W8	P3	TNMRW16X520	5P	200	39	-	80	19	15	18	4	3	¥ 25,700*
1 W8	P3	TNMRW16X525	5P	250	39	-	80	19	15	18	4	3	¥ 30,600*
1 W8	P3	TNMRW16X115	1.5P	150	39	-	80	19	15	18	4	3	¥ 20,600*
1 W8	P3	TNMRW16X120	1.5P	200	39	-	80	19	15	18	4	3	¥ 25,700*
1 W8	P3	TNMRW16X125	1.5P	250	39	-	80	19	15	18	4	3	¥ 30,600*

① Spiral Fluted Taps
(for blind hole)

② Spiral Fluted Taps
(for through hole)

③ Spiral Pointed Taps
(for through hole)

④ Hand Taps

⑤ Cemented Carbide Taps

⑥ Roll Taps

⑦ Special Thread Taps
Simple inspection tools

⑧ Pipe Taps

⑨ Thread Mills

⑩ Dies

⑪ Center Drills
Centering Tools

JIS

④-79



* = Specified Distribution Items. Made to order products.
For improvement, spec may change without advance notice.