

Overall length	Thread length	Shank length	Shank dia.	Size of square	Length of square
L	ℓ	ℓ_s	Ds	K	ℓ_k

JIS

①

Spiral Fluted Taps
(for blind hole)

②

Spiral Fluted Taps
(for through hole)

③

Spiral Pointed Taps
(for through hole)

④

Hand Taps

⑤

Cemented
Carbide Taps

⑥

Roll Taps

⑦

Special Thread Taps
Simple Inspection Tools

⑧

Pipe Taps

⑨

Thread Mills
Premium Thread Mills

⑩

Dies

⑪

Center Drills
Centering Tools

⑫

Precision Machinery/
Medical Surgical Instruments

JIS

⑦-47



HT MST

Hand Tap for Microscope Objective Lens



Specification



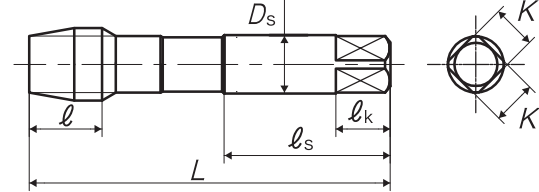
Tapping Speeds depending on Materials



Product Features

- Taps for Microscope Objective Lens
- The taps can be used for creating internal screw threads with machining center or by hand and rethreading as well. For through hole use.
- For RMS-type Whitworth threads specified in JIS B 7141 "Microscopes objective lens".

TYPE: 1



Segment : 1A

Size	Code	Chamfer	L (mm)	ℓ (mm)	ℓ_s (mm)	Ds (mm)	K (mm)	ℓ_k (mm)	No. of flutes	TYPE	MSRP
For Microscope Objective Lens											
20.32W36	TYRMS10LEB5	5P	87	16	44	18	14	17	4	1	¥ 30,300 □
20.32W36	TYRMS10LEBA	1.5P	87	16	44	18	14	17	4	1	¥ 30,300 □
26W36	TYRMS20LEB5	5P	96	17	49	23	17	20	4	1	¥ 44,200 □
26W36	TYRMS20LEBA	1.5P	96	17	49	23	17	20	4	1	¥ 44,200 □

Internal thread specifications of threads for microscope objective lens

unit : mm

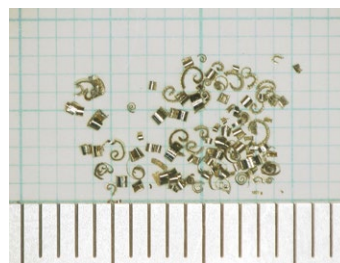
Size	Allowable Value	Major Diameter (D)	Pitch Diameter (D ₂)	Minor Diameter (D ₁)
20.32W36	Max.	20.396	19.944	19.550
	Min.	20.320	19.868	19.474
26W36	Max.	-	25.660	25.300
	Min.	26.000	25.580	25.200

*M25 size (M25×0.75), M27 size (M27×0.75), and M32 size (M32×0.75) standards are also available. These can be supported by "HT" (See page ④-16 and 17).



The tap is used for internal threads of a microscope revolver as shown in the picture.

Chips(brass)



For Microscope Objective Lens

unit : mm

Size	Class	Major Diameter Basic Size	Pitch Diameter Basic Size	Minor Diameter Basic Size
20.32W36	-	20.320	19.868	19.416
26W36	-	26.000	25.548	25.096

Bored hole size

Size	Minor Diameter of Internal Thread (D ₁)		Bored Hole Size (Reference)
	Max.	Min.	
20.32W36	19.550	19.474	19.53
26W36	25.300	25.200	25.28