

Overall length	Thread length	Position on basic dia.	Shank dia.	Size of square	Length of square
L	ℓ	ℓg	Ds	K	ℓk



## CT-PT

Carbide Taps for Taper Pipe Threads, Long (ℓg) Type, for Cast Irons



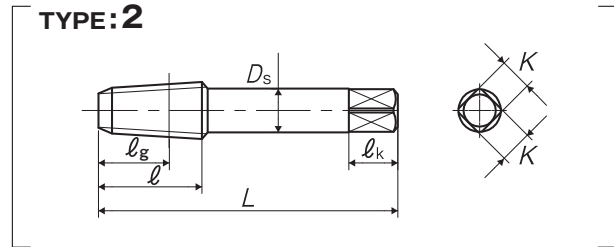
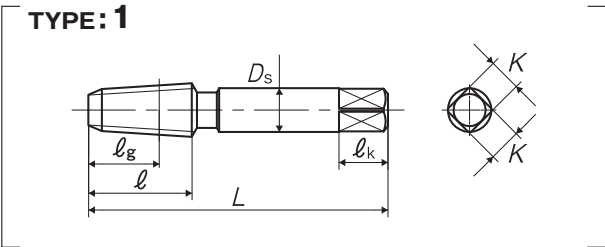
### Specification



■ The CT-PT is a hand tap for tapered pipe threads and is suitable for thread processing in mass production of materials that are hard and brittle such as cast iron. Those products are mainly used for connecting parts for pipes for thread resistance.

### Tapping Speeds depending on Materials

<b>Cast irons</b> 鑄鉄 ~5 (m/min)	<b>Ductile cast irons</b> 強靱鑄鉄 ~5 (m/min)	<b>Brass castings</b> 黄銅鑄物 ~5 (m/min)
--	--	--



Segment : 1L

Size	Class	Code	Chamfer	Basic major dia (mm)	L (mm)	ℓ (mm)	ℓg (mm)	Ds (mm)	K (mm)	ℓk (mm)	No. of flutes	TYPE	MSRP
For Pipe Threads													
PT 1/16-28	II	TCPT01K	2.5P	7.723	55	19	13	8	6	9	4	1	¥ 30,300 <sup>*</sup>
PT 1/8-28	II	TCPT02K	2.5P	9.728	55	19	13	8	6	9	4	2	¥ 30,300 <sup>*</sup>
PT 1/4-19	II	TCPT04-	2.5P	13.157	62	28	21	11	9	12	4	2	¥ 47,200 <sup>*</sup>
PT 3/8-19	II	TCPT06-	2.5P	16.662	65	28	21	14	11	14	4	2	¥ 59,000 <sup>*</sup>
PT 1/2-14	II	TCPT08Q	2.5P	20.955	80	35	25	18	14	17	4	2	¥ 58,200 <sup>*</sup>
PT 3/4-14	II	TCPT12Q	2.5P	26.441	85	35	25	23	17	20	4	2	¥ 72,100 <sup>*</sup>
PT 1 -11	II	TCPT16U	2.5P	33.249	95	45	32	26	21	24	5	2	¥ 103,000 <sup>*</sup>