

Point dia.	Shank dia.	Overall length	Point length
Dc	Ds	L	ℓ <sub>1</sub>

JIS

① Spiral Fluted Taps  
(for blind hole)

② Spiral Fluted Taps  
(for through hole)

③ Spiral Pointed Taps  
(for through hole)

④ Hand Taps

⑤ Cemented Carbide Taps

⑥ Roll Taps

⑦ Special Thread Taps  
Simple inspection tools

⑧ Pipe Taps

⑨ Thread Mills  
Premium Thread Mills

⑩ Dies

⑪ Center Drills  
Centering Tools

⑫ Precision Machinery/  
Medical Surgical Instruments

JIS  
⑪-51



## PE-SL V

Long Shank Point Drills 60°, Coated



### Specification

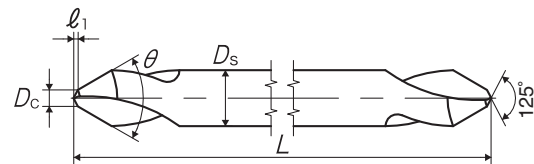


■ PE-SL V is the point drill enabling positioning (125° edge angle) and chamfering (60°) simultaneously. High cutting accuracy is available owing to a good cutting-start due to 2 step flat design. Optimum coating suitable for the cutting condition.

### Cutting Speed depending on Materials

Low carbon steels 低碳素鋼 <b>30~40</b> (m/min)	Medium carbon steels 中炭素鋼 <b>25~35</b> (m/min)	High carbon steels 高炭素鋼 <b>20~30</b> (m/min)	Alloy steels 合金鋼 <b>20~25</b> (m/min)	Thermal refined steels 調質鋼 <b>10~15</b> (m/min)	Stainless steels ステンレス鋼 <b>10~15</b> (m/min)	Cast irons 鑄鉄 <b>30~40</b> (m/min)
				25~35HRC		
Aluminum alloy castings アルミ合金鑄物 <b>65~95</b> (m/min)						

### TYPE: 1



Segment : 56

Size Ds × Dc × θ	Code	Dc (mm)	Ds (mm)	L (mm)	ℓ <sub>1</sub> (mm)	TYPE	MSRP
4 × 1 × 60°	VPEL4.0S	1	4	100	0.26	1	¥ 9,230
6 × 2 × 60°	VPEL6.0S	2	6	100	0.52	1	¥ 9,710
8 × 2.5 × 60°	VPEL8.0S	2.5	8	100	0.65	1	¥ 10,900
8 × 2.5 × 60°	VPPEM8.0S	2.5	8	150	0.65	1	¥ 14,600
10 × 3 × 60°	VPEL10.0S	3	10	100	0.78	1	¥ 13,100
10 × 3 × 60°	VPPEM10.0S	3	10	150	0.78	1	¥ 16,800
12 × 3.5 × 60°	VPEL12.0S	3.5	12	100	0.91	1	¥ 15,500
12 × 3.5 × 60°	VPPEM12.0S	3.5	12	150	0.91	1	¥ 19,700
16 × 4 × 60°	VPPEM16.0S	4	16	150	1.04	1	¥ 25,200